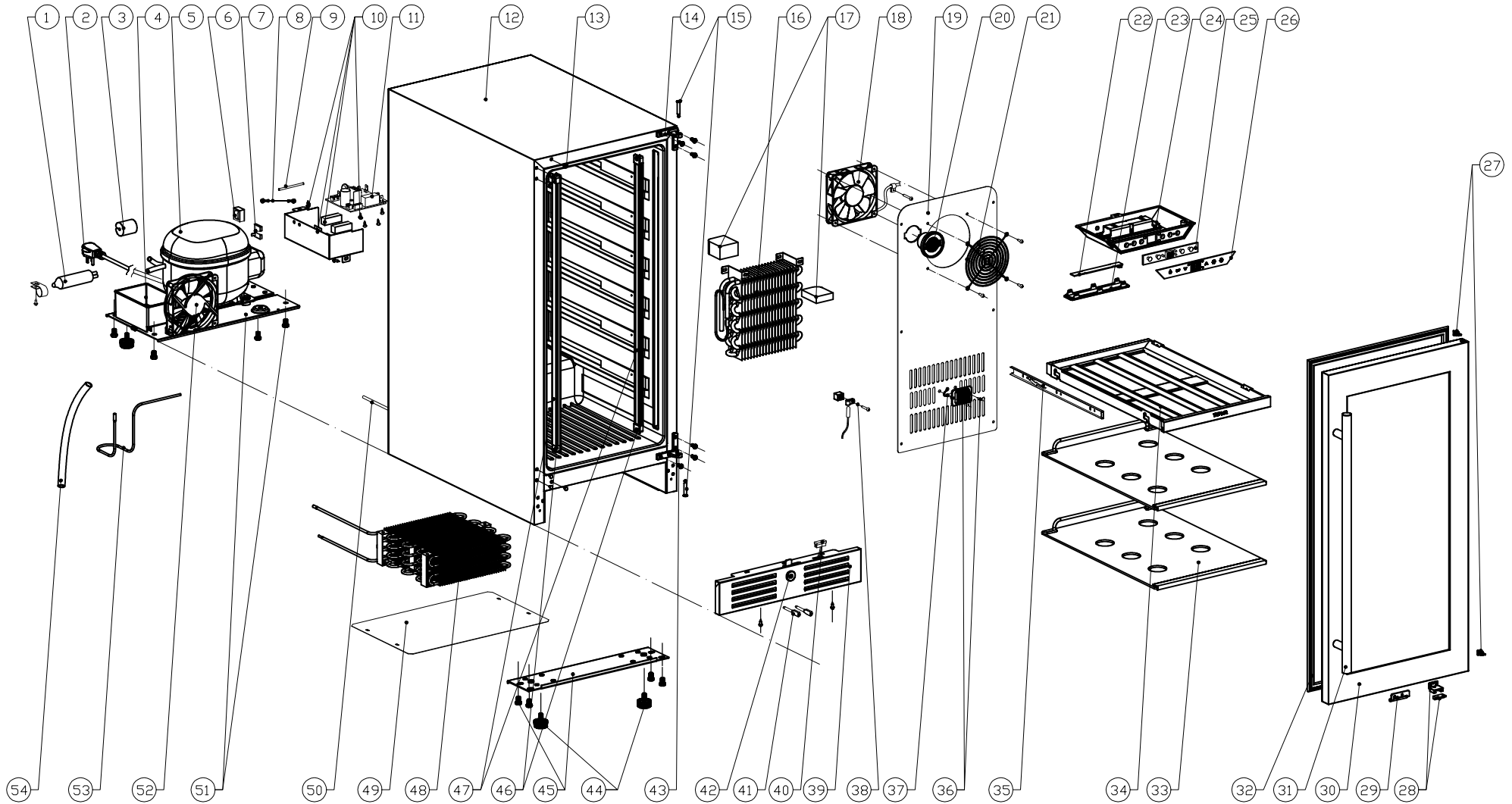


PRB15C01CG

Presrv™ Single Zone Beverage Cooler

ZEPHYR



PRB15C01CG

| Ref # | Part # | Description | Qty. |
|--------------|---------------|--------------------------|-------------|
| 1 | 56300003 | Dryer Filter | 1 |
| 2 | 11030118 | Power Cord | 1 |
| 3 | 56220051 | Anti Vibration Gasket | 2 |
| 4 | 56130043 | Drip Tray | 1 |
| 5 | 12160008 | Compressor | 1 |
| 5-1 | 12050048 | Compressor Capacitor | 1 |
| 6 | 11050028 | Compressor Starter | 1 |
| 7 | 11050029 | Compressor Relay | 1 |
| 8 | 11030119 | Compressor Ground Wire | 1 |
| 9 | 50330010 | Sealing Tube | 1 |
| 10 | 56200121 | Main PCB Box | 1 |
| 11 | 11010169 | Main Power Control Board | 1 |
| 13 | 56210075 | Decorative Hole Cover | 6 |
| 14 | 54180072 | Upper Right Hinge | 1 |
| 14-1 | 01020066 | Hinge Screw | 3 |
| 15 | 50330037 | Door Axis Pin | 2 |
| 16 | 54240005 | Evaporator | 1 |
| 17 | 56180015 | Evaporator Foam | 2 |
| 18 | 12130043 | Evaporator Fan Assembly | 1 |
| 19 | 54170023 | Air Duct Board | 1 |
| 20 | Z0F-C004 | Carbon Filter | 1 |
| 21 | 54210017 | Fan Cover | 1 |
| 22 | 12010018 | LED Light | 1 |
| 23 | 52150017 | LED Light Cover | 1 |
| 24 | 56200124 | Display Box | 1 |
| 25 | 11010170 | Display Control Board | 1 |
| 26 | 52050030 | Display Panel | 1 |
| 27 | 54210038 | Door Axis Cover | 2 |

| | | | |
|------|----------|--------------------------|---|
| 28 | 54220011 | Magnet | 1 |
| 28-1 | 54140247 | Magnet Bracket | 1 |
| 29 | 54050093 | Door Lock Plate | 1 |
| 30 | 50230036 | Door | 1 |
| 31 | 50280003 | Handle | 1 |
| 32 | 56220058 | Door Gasket | 1 |
| 33 | 50150067 | Glass Shelf | 2 |
| 34 | 50150038 | Wooden Shelf | 1 |
| 35 | 50320040 | Shelf Slider Set | 1 |
| 36 | 54210014 | Sensor Cover | 1 |
| 37 | 11050008 | Sensor | 1 |
| 38 | 11050007 | Sensor | 1 |
| 39 | 50260023 | Kick Plate | 1 |
| 39-1 | 01020073 | Kick Plate Screw | 5 |
| 40 | 11040033 | Magnetic Switch | 1 |
| 41 | 15000019 | Door Lock Key | 2 |
| 42 | 50180006 | Door Lock | 1 |
| 43 | 54180073 | Lower Right Hinge | 1 |
| 43-1 | 01020066 | Hinge Screw | 3 |
| 44 | 50350008 | Leveling Leg | 4 |
| 45 | 54140294 | Cabinet Bottom Bracket | 1 |
| 45-1 | 01060015 | Cabinet Bracket Screw | 4 |
| 46 | 56140022 | LED End Cap | 4 |
| 46-1 | 01020065 | Screw Cover | 4 |
| 47 | 12010019 | LED Light Assembly | 2 |
| 48 | 54270005 | Condensor | 1 |
| 49 | 54210018 | Condensor Cover | 1 |
| 50 | 50330033 | Capillary Tube | 1 |
| 51 | 54190068 | Compressor Support Plate | 1 |
| 51-1 | 01060015 | Support Plate Screw | 4 |
| 52 | 12130043 | Fan | 1 |
| 52-1 | 54210016 | Fan Cover | 1 |

| | | | |
|----|----------|-----------------|---|
| 53 | 50330032 | Connecting Pipe | 1 |
| 54 | 50330025 | Water Pipe | 1 |
| 55 | 00100030 | Hex Wrench M3 | 1 |

OCT25.0201