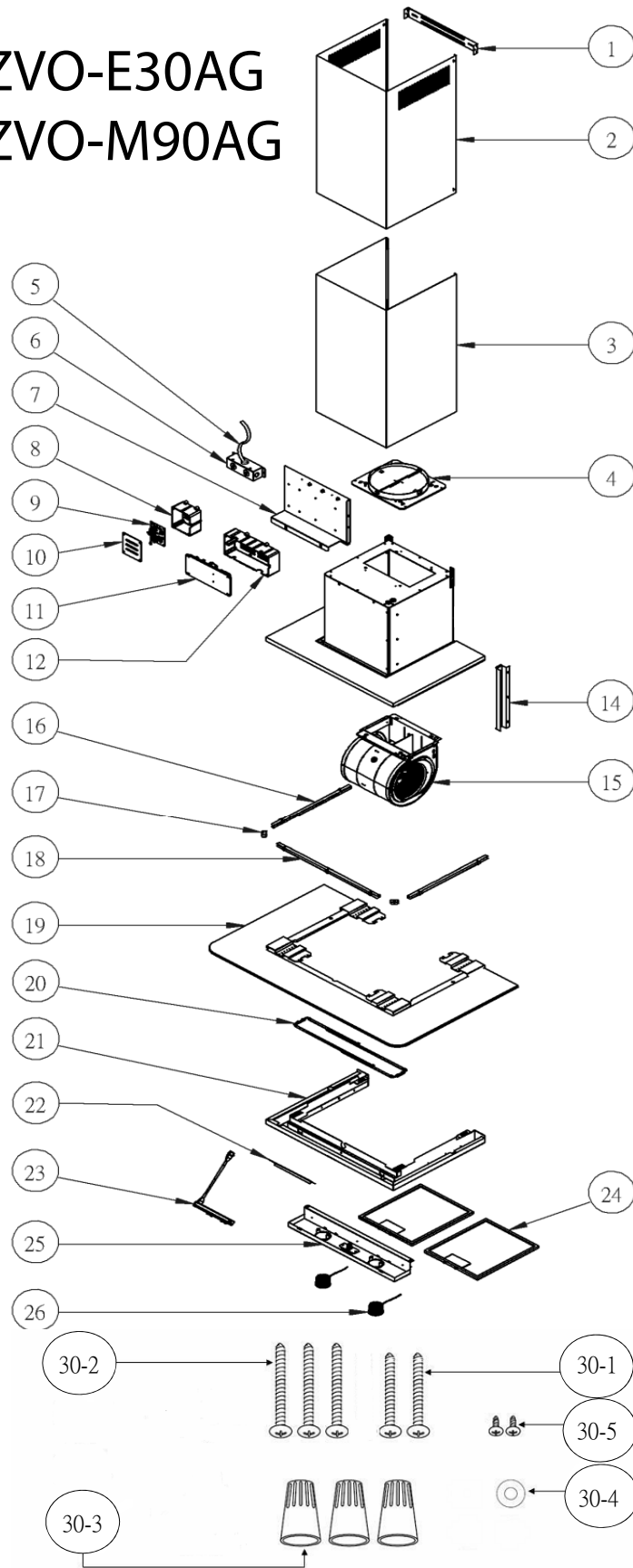


ZVO-E30AG ZVO-M90AG



ZEPHYR

Verona

ZVO-E30AG, ZVO-M90AG

Ref #	Part #	Description	Qty.
1	54110079	Bracket, Duct Cover	1
2	50050122	Duct Cover, Upper	1
3	50050123	Duct Cover, Lower	1
4	54050080	Collar, 8" Round w/Damper	1
5	11030070	Wires, Electrical	1
6	56200080	Box, Electrical	1
7	54140183	Plate, Electrical	1
8	56200079	Box, LED Control Board	1
9	11010049	Control Board, LED	1
10	56210066	Cover, LED Control Board Box	1
11	11010043	Control Board (SN <24)	1
11	11010051	Control Board (SN 24+)	1
12	54200019	Box, Component	1
14	54140109	Bracket, Wiring	1
15	12120064	Motor	1
16	54140110	Bracket, LED, Side	2
17	54140111	Bracket, LED, Corner	2
18	54140112	Bracket, LED, Front	1
19	50300089	Glass Canopy (ZVO-E3AG)	1
19	50300088	Glass Canopy (ZVO-M90AG)	1
20	50500104	Assembly, LED Lighting	1
21	50130105	Panel, Bottom	1
22	54140096	Bracket, Switch	1
23	11000066	Switch Assembly	1
24	50200045	Filter, Aluminum Mesh	2
25	50500105	Light Panel Assembly (SN <24)	1
25	50110150	Light Panel Assembly (SN 24+)	1
25-1	11040020	Button Switch, Lighted Glass	1
25-2	54190031	Plate, Button	1
25-3	54140114	Bracket, Button	1
25-4	52170050	Cover, Button	1

26	Z0B0032	Bulb, Bloom LED 3W (SN <24)	3
26	Z0B0034	Bulb, Bloom LED 6W (SN 24+)	2
30	05000078	Hardware Packet	1
30-1	01090001	Screw, M6 x 1"	2
30-2	01090002	Screw, M6 x 1 1/2"	3
30-3	15000002	Wire Nut	3
30-4	02170001	Washer	1
30-5	01060004	Screw, M3 x 8mm	2

FEB15.0201