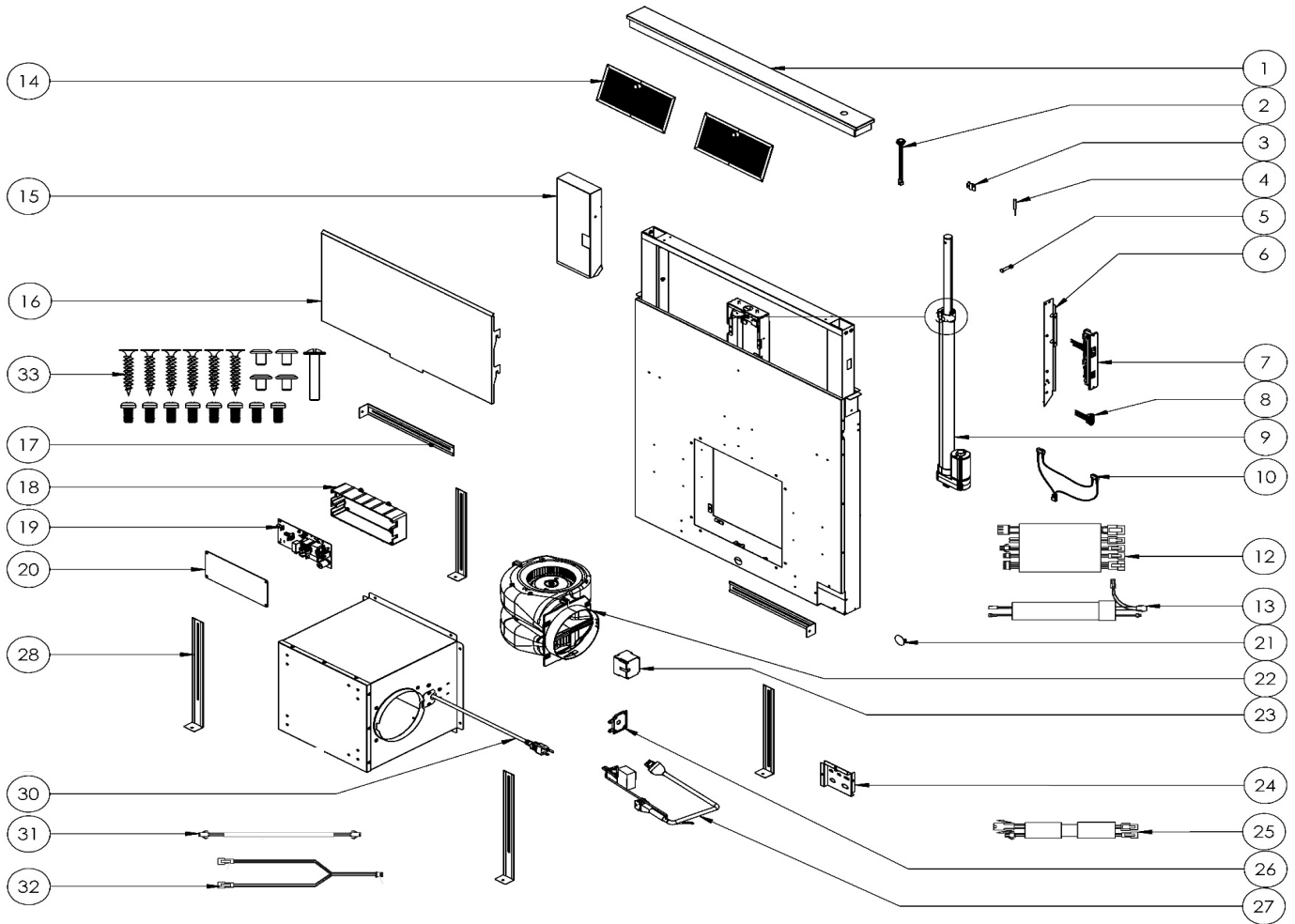


# ZTV-E30AS

## ZTV-E36AS



## ZTV-E30AS, ZTV-E36AS

Ref #	Part #	Description	Qty.
1	50140229	Top Cover, 30"	1
1	50140230	Top Cover, 36"	1
2	11040036	Up/Down Button	1
3	54140394	Heat Sensor Bracket	1
4	11050041	Heat Sensor Assembly	1
5	01060018	Actuator Bolt	1
6	50120257	Switch Access Panel	1
7	11000190	Switch Assembly	1
8	11040038	ACT Switch	1
9	54260010	Actuator	1
10	11040039	Actuator Microswitch Assembly	1
12	11030212	Wiring Harness, PCB to Hood	1
13	11030213	Wiring Harness, Microswitch to Heat Sensor	1
14	50200079	Mesh Filter, 30"	2
14	50200080	Mesh Filter, 36"	2
15	56210126	Actuator Cover	1
16	50140239	Front PAS Panel, 30"	1
16	50140240	Front PAS Panel, 36"	1
17	54140395	Short Leveling Bracket	4
18	56200138	Control Board Box	1
19	11010197	Control Board	1
20	56210071	Control Board Box Cover	1
21	56210127	Hole Cover	1
22	12120089	Motor	1
23	56200037	Capacitor Box	1
24	54210050	Wiring Cover	1
25	11030214	Wiring Harness, Up/Down Button & Heat Sensor	1
26	56210018	Capacitor Box Cover	1
27	11030021	Motor Harness w/Capacitor	1
28	54140396	Long Leveling Bracket	2
30	11030215	Power Cord w/Plug	1
31	11030216	Wiring Harness, Up/Down Button to Wiring Plate	1
32	11030217	Wiring Harness, PCB to Connector	1
33	05000212	Hardware Packet	1