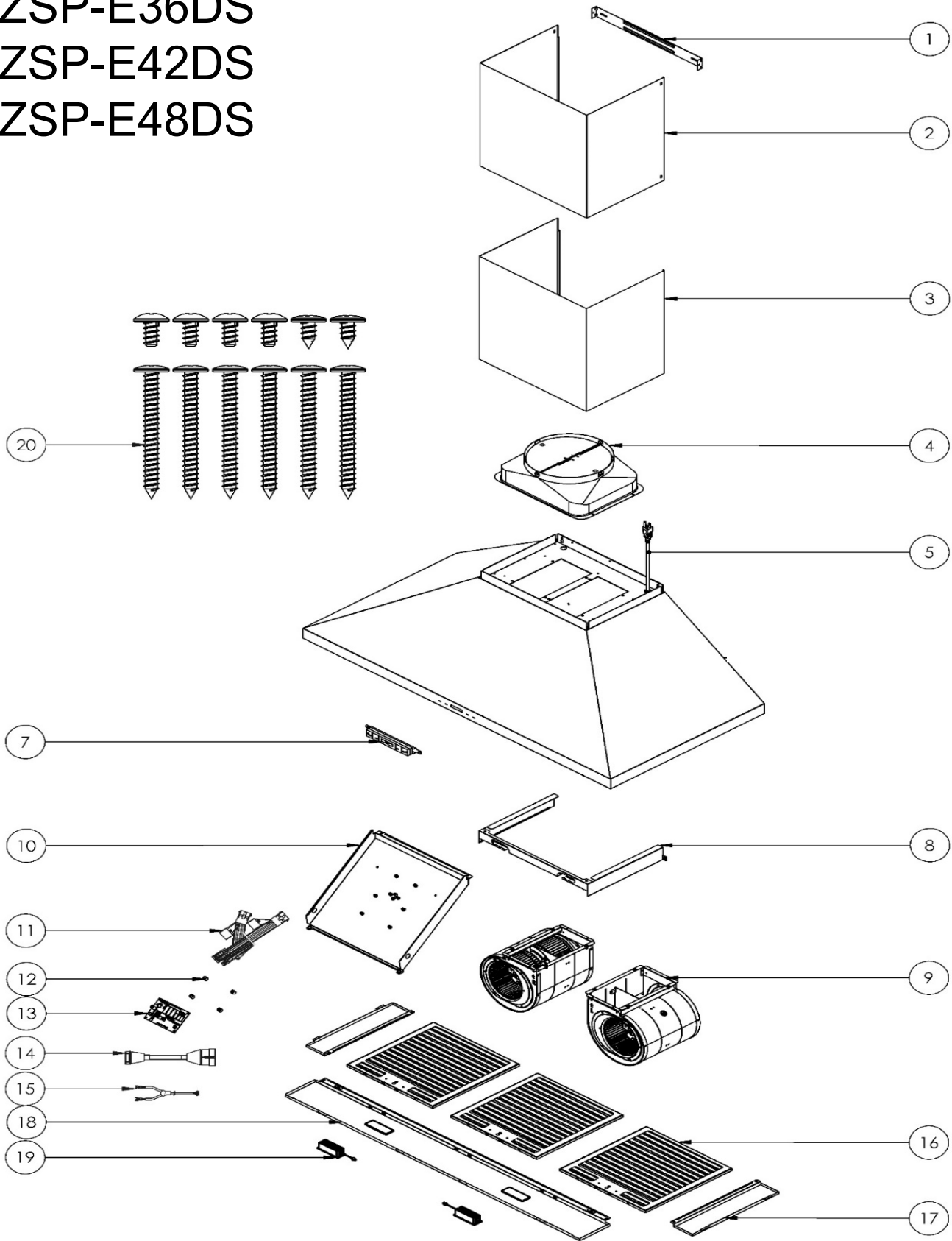


ZSP-E36DS
ZSP-E42DS
ZSP-E48DS



ZEPHYR

Siena Pro

ZSP-E36DS, ZSP-E42DS, ZSP-E48DS

Ref #	Part #	Description	Qty.
1	54110133	Duct Cover Bracket	1
2	50050143	Upper Duct Cover	1
3	50050144	Lower Duct Cover	1
4	54050081	Transition Collar, 10" Round	1
5	11030081	Power Cord	1
7	11000183	ICON Touch LCD Control Assembly	1
7-1	01650001	Switch Assembly Bracket Screw	2
8	54140383	PCB Bracket	1
9	12120103	Motor Assembly	2
9-1	01650011	Motor Screw	8
10	54190086	PCB Plate	1
10-1	01020024	PCB Plate Screw	4
11	12050044	Capacitor	1
11-1	01650001	Capacitor Screw	2
12	56240022	PCB Spacer	4
13	11010190	Main Power Control Board	1
13-1	01650006	PCB Screw	4
14	11030198	Switch Wiring Harness	1
15	11030206	LED Wiring Harness	1
16	50210053	Hybrid Baffle Filter (48" x3)	2
17	50120247	Side Spacer Panel (ZSP-E36DS)	2
17	50120248	Side Spacer Panel (ZSP-E42DS)	2
17	50120249	Side Spacer Panel (ZSP-E48DS)	2
17-1	01020024	Side Panel Screw	4
18	50110450	Light Panel (ZSP-E36DS)	1
18	50110451	Light Panel (ZSP-E42DS)	1

18	50110452	Light Panel (ZSP-E48DS)	1
18-1	01020024	Light Panel Screw	2
19	Z0B0067	LumiLight LED w/TruHue, 6W	2
20	05000102	Hardware Packet	1

AUG24.0201