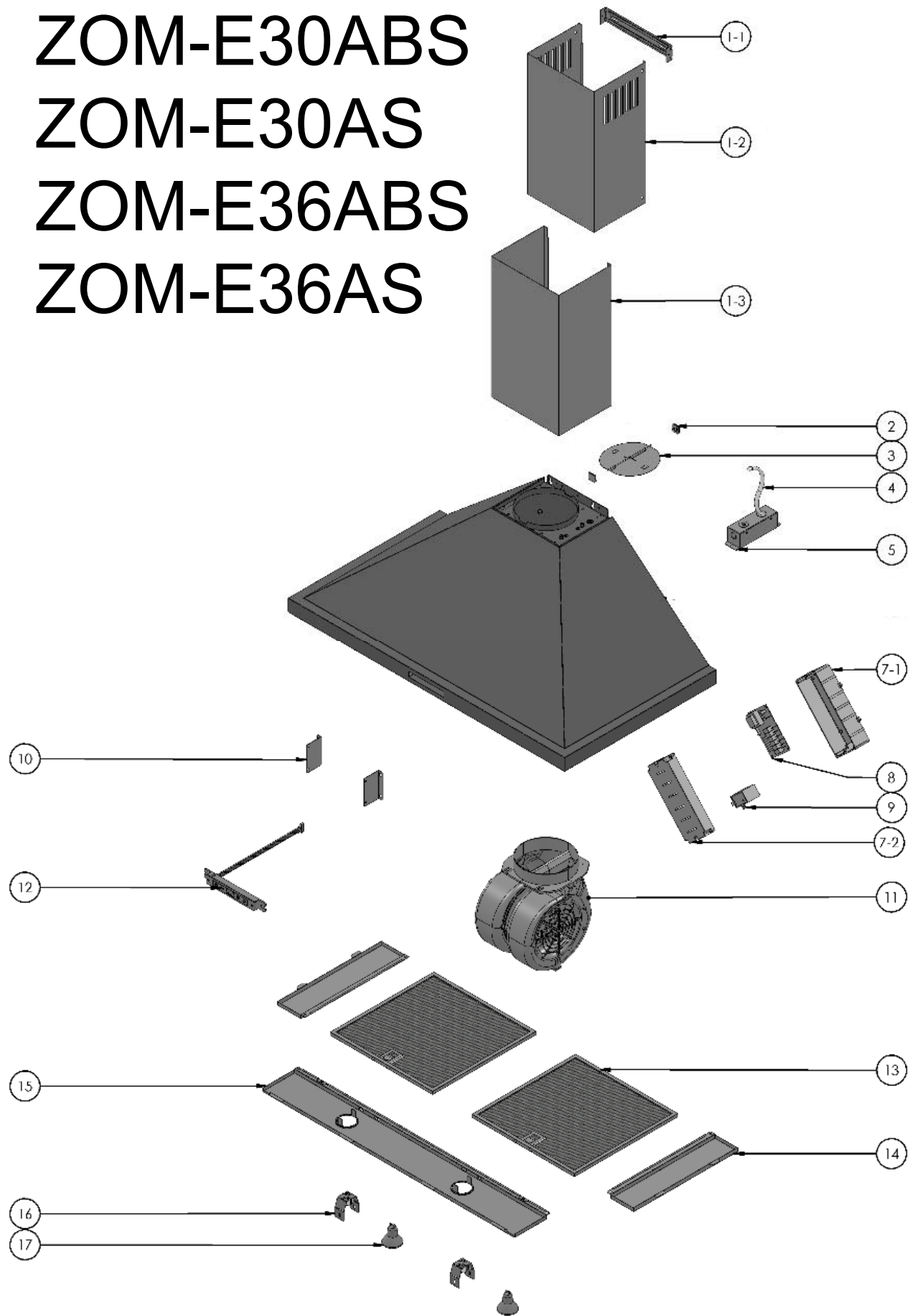


ZOM-E30ABS
ZOM-E30AS
ZOM-E36ABS
ZOM-E36AS





Ombra Wall

ZOM-E30ABS, ZOM-E30AS, ZOM-E36ABS, ZOM-E36AS

Ref #	Part #	Description	Qty.
1-1	54110052	Duct Cover Bracket	1
1-2	50050185	Upper Duct Cover, Black SS	1
1-2	50050192	Upper Duct Cover, SS	1
1-3	50050186	Lower Duct Cover, Black SS	1
1-3	50050193	Lower Duct Cover, SS	1
2	50180002	Damper Clip	2
3	54060004	6in Round Damper	1
4	11030028	Electrical Power Cord	1
5	56200081	Electrical Junction Box	1
7	50500044	Component Box Assembly	1
7-1	56200051	Component Box	1
7-2	56210024	Component Box Cover	1
8	11010096	Control Board	1
9	12050021	Capacitor	1
10	54140173	Motor Bracket	2
11	12120066	Motor	1
12	11000134	Switch Assembly	1
13	50200059	Aluminum Mesh Filter	2
14	50120135	Side Panel (ZOM-E36ABS)	2
14	50120159	Side Panel (ZOM-E36AS)	2
15	50110215	Light Panel (ZOM-E30ABS)	1
15	50110244	Light Panel (ZOM-E30AS)	1
15	50110216	Light Panel (ZOM-E36ABS)	1
15	50110245	Light Panel (ZOM-E36AS)	1
16	50500145	Light Socket Assembly	2
17	Z0B0023	Light Bulb, GU10 Halogen, 35W	2
18	05000060	Hardware Packet	1