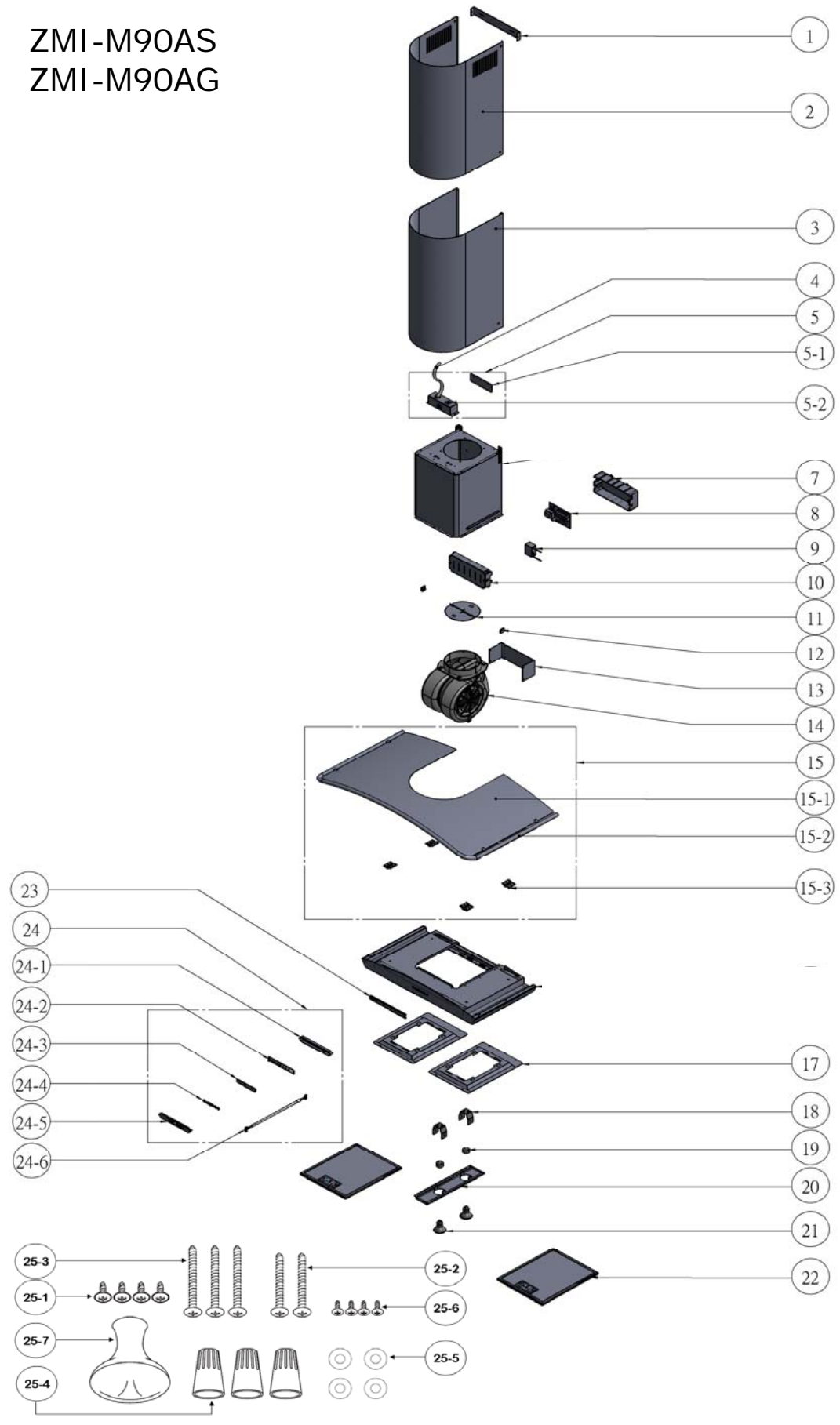


ZMI-M90AS
ZMI-M90AG





Milano Wall

ZMI-M90AG, ZMI-M90AS

Ref #	Part #	Description	Qty.
1	54110050	Bracket, Duct Cover	1
2	50050055	Duct Cover, Upper	1
3	50050056	Duct Cover, Lower	1
4	11030020	Wires, Electrical	1
5	50500043	Assembly, Electrical Box	1
5-1	56210048	Cover, Electrical Box	1
5-2	56200062	Box, Electrical	1
7	56200051	Box, Junction	1
8	11010034	Control Board	1
8-1	12170004	Fuse, 8A, 250V	1
9	12050021	Capacitor	1
10	56210024	Cover, Junction Box	1
11	54060004	Damper, 6" Round	1
12	50180002	Clip, Damper	2
13	54140051	Bracket, Motor	1
14	12120043	Motor	1
15	50300048	Canopy, Stainless (ZMI-M90AS)	1
15	50300049	Canopy, Glass (ZMI-M90AG)	1
15-2	50320053	Rail, Stainless Canopy	1
15-3	50260001	Plate, Canopy	4
17	54140063	Bracket, Charcoal Filter	2
18	54140050	Bracket, Light Socket	2
19	12100027	Light Socket	2
20	50110071	Light Panel	1
21	Z0B-0020	Bulb, Halogen, GU10, 50W	2
22	50200011	Filter, Metal Mesh	2

23	50100020	Panel, Switch	1
24	11000043	Switch Assembly	1
24-1	52170033	Housing, Switch Board	1
24-2	11010035	Switch Board	1
24-3	52110015	Switch Membrane	1
24-4	52170037	Plate, Switch Button	1
24-5	56210049	Cover, Switch	1
24-6	11030035	Cable, Switch	1
25	05000059	Hardware Packet	1
25-1	01020011	Screw, 3/16 x 1/4	4
25-2	01090001	Screw, M6 x 1"	2
25-3	01090002	Screw, M6 x 1 1/2"	3
25-4	15000002	Wire Nuts	3
25-5	02170001	Washer, 1/4 ID, 1/2 OD	1
25-6	01060004	Screw, M3 x 8mm	4
25-7	15000004	Suction Cup	1

DEC10.0201