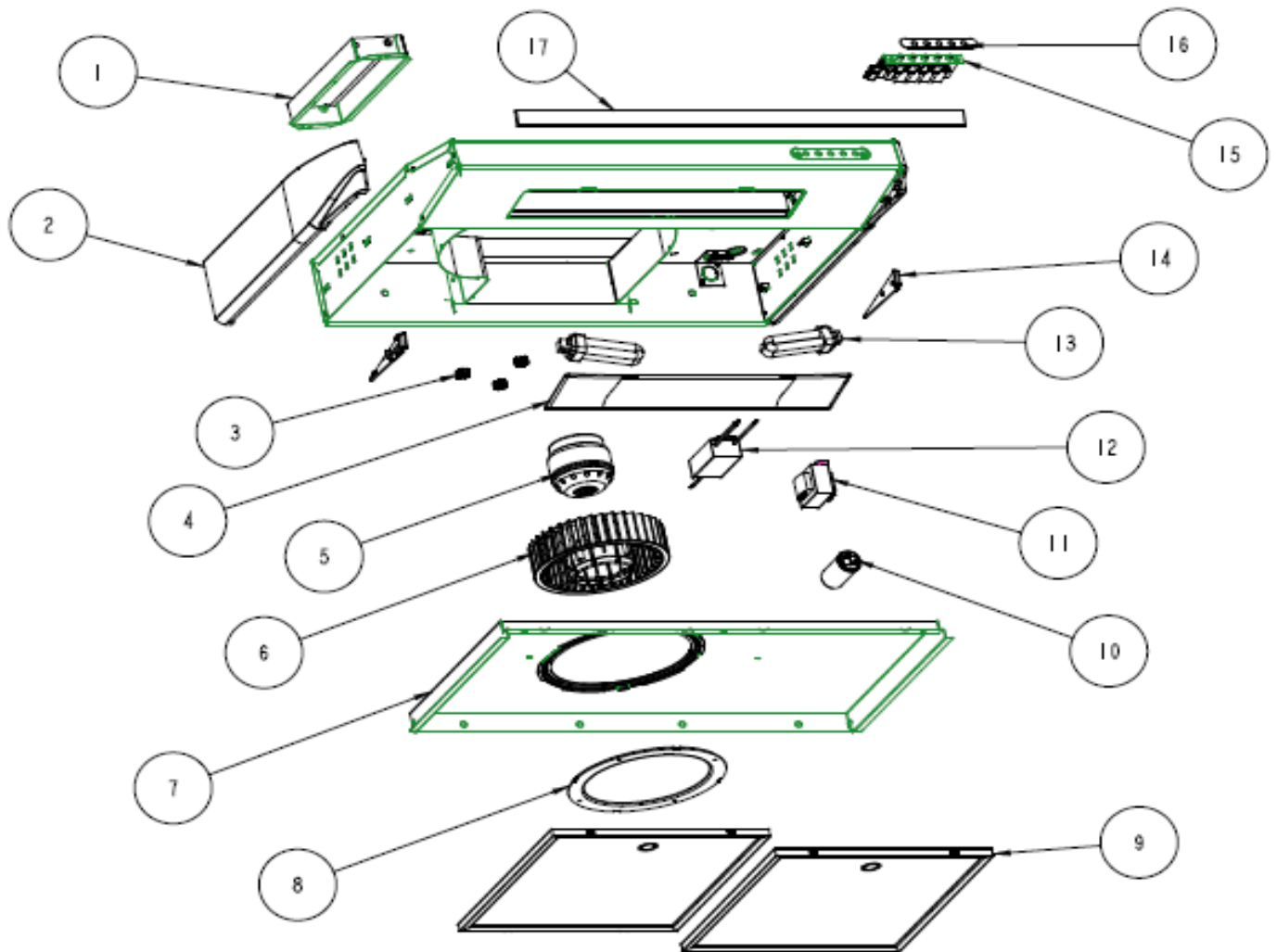


ES1-E30A (B,S,W)



ZEPHYR

ES1-E30A (B,S,W)

Ref #	Zephyr #	Description	per Hood
1	54050061	Starting Collar, Rectangular	1
2	50120031	Panels, Side Pair (B)	1
2	50120032	Panels, Side Pair (S)	1
2	50120033	Panels, Side Pair (W)	1
3	00100017	Rubber Motor Grommets	3
4	50110057	Panel, Light	1
5	12120055	Motor	1
6	54250019	Blower Wheel	1
7	50130080	Panel, Bottom (B,S)	1
7	50130081	Panel, Bottom (W)	1
8	54050062	Collar	1
9	50200026	Filter, Metal Mesh	2
10	12050020	Capacitor 7.5uF	1
11	12110014	Transformer	1
12	12150001	Ballast (Light Sockets Included)	1
13	Z0B-0024	Bulb, Fluorescent 13w G24	2
14	54140046	Holder, Glass (B)	1
14	54140047	Holder, Glass (S)	1
14	54140048	Holder, Glass (W)	1
15	11000024	Switch Assembly (B)	1
15	11000025	Switch Assembly (S)	1
15	11000026	Switch Assembly (W)	1
16	52050011	Membrane (B)	1
16	52050012	Membrane (S)	1
16	52050013	Membrane (W)	1
17	52110014	Panel, Glass Front	1
	05000053	Hardware Packet	1

FEB08.0101