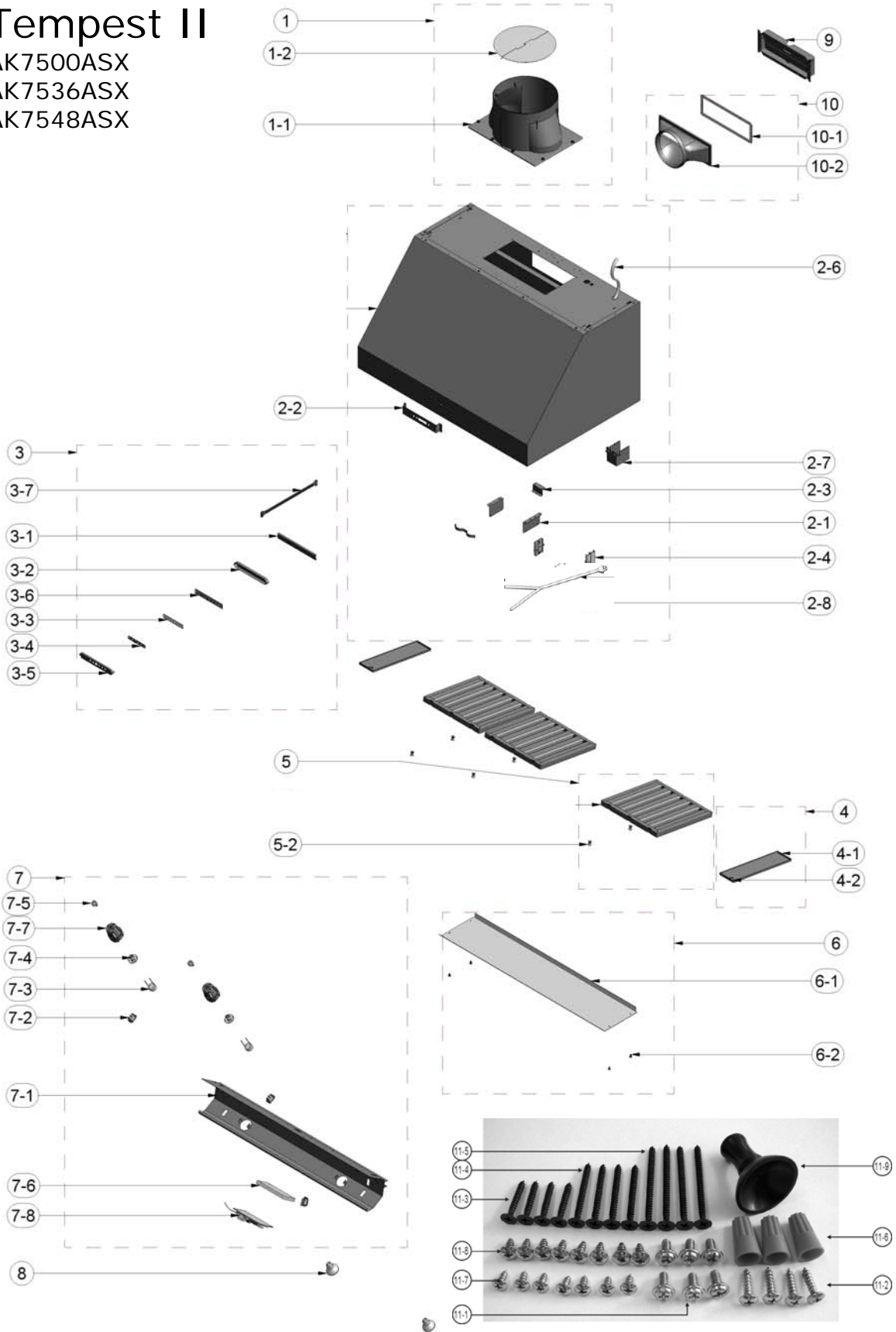


# Tempest II

AK7500ASX  
AK7536ASX  
AK7548ASX





# Tempest II

AK7500ASX, AK7536ASX, AK7548ASX

Ref #	Part #	Description	Qty.
1	50500015	Assembly, 10" Transition	1
1-1	54050060	Adaptor, 10" Round Transition	1
1-2	54060005	Damper, 10" Round	1
2-1	54140028	Bracket, Motor	2
2-2	54140044	Bracket, Switch	1
2-3	54190010	Plate, Interior	1
2-4	56210011	Connector Cover	2
2-6	11030016	Wires, Electrical	1
2-7	54200011	Electrical Box	1
2-8	54140029	Filter Clip (36" x 3, 48" x 4)	2
3	11000023	Switch Assembly	1
3-1	54190009	Panel, Switch	1
3-2	52170033	Housing, Switch Board	1
3-3	52110011	Membrane	1
3-5	56200050	Cover, Switch Housing	1
3-6	11010028	Switch Board	1
3-7	11030035	Wiring, Switch	1
4	50500002	Assembly, Panel (AK7500ASX)	2
4-1	50120030	Panel, Spacer (AK7500ASX)	2
4-2	54160009	Spring Clip (AK7500ASX)	2
5	50210007	Baffle Filter (36" x 3, 48" x 4)	2
5-2	50280002	Filter Handle (36" x 6, 48" x 8)	4
6	50500009	Assembly, Bottom Panel (AK7500ASX)	1
6	50500010	Assembly, Bottom Panel (AK7536ASX)	1
6	50500011	Assembly, Bottom Panel (AK7548ASX)	1
6-1	50130077	Panel, Bottom (AK7500ASX)	1
6-1	50130078	Panel, Bottom (AK7536ASX)	1
6-1	50130079	Panel, Bottom (AK7548ASX)	1
6-2	01020016	Screw, SS Cariage	4
7	50500012	Assembly, Light Panel (AK7500ASX)	1
7	50500013	Assembly, Light Panel (AK7536ASX)	1

7	50500014	Assembly, Light Panel (AK7548ASX)	1
7-1	50110054	Panel, Light (AK7500ASX)	1
7-1	50110055	Panel, Light (AK7536ASX)	1
7-1	50110056	Panel, Light (AK7548ASX)	1
7-2	11040011	Switch Control (Heat Lamp)	3
7-3	12100025	Socket, Light, GU-10 (48" x 3)	2
7-4	54190002	Plate, Light Socket (48" x 3)	2
7-5	56250002	Insulator, Light Socket (48" x 3)	2
7-6	56200009	Housing, Control Board	1
7-7	56200049	Housing, Light Socket	2
7-8	11010031	Control Board	1
7-9	12170002	Fuse, 4A, 250V	1
8	Z0B-0023	Bulb, Halogen, GU-10 35W (48" x 3)	2
9	54050009	Rectangular Starting Collar	1
10	54050059	Transition Adaptor, Rectangular w/ gasket	1
10-1	56220021	Gasket, Transition Adaptor	1
10-2	54050043	Transition Adaptor, Rectangular	1
11	05000052	Hardware Packet	1
11-1	01650001	Screw, 3/16" x 3/8"	6
11-2	01070003	Screw, M4 x 16mm	4
11-3	01090001	Screw, M6 x 1"	4
11-4	01090002	Screw, M6 x 1-1/2"	4
11-5	01090003	Screw, M6 x 2"	4
11-6	15000002	Wire Caps	3
11-7	01060004	Screw, M3 x 8mm	7
11-8	01070010	Screw, M4 x 8mm	8
11-9	15000004	Suction Cup	1
12	11030038	Cable, External Motor	1

DEC10.0301