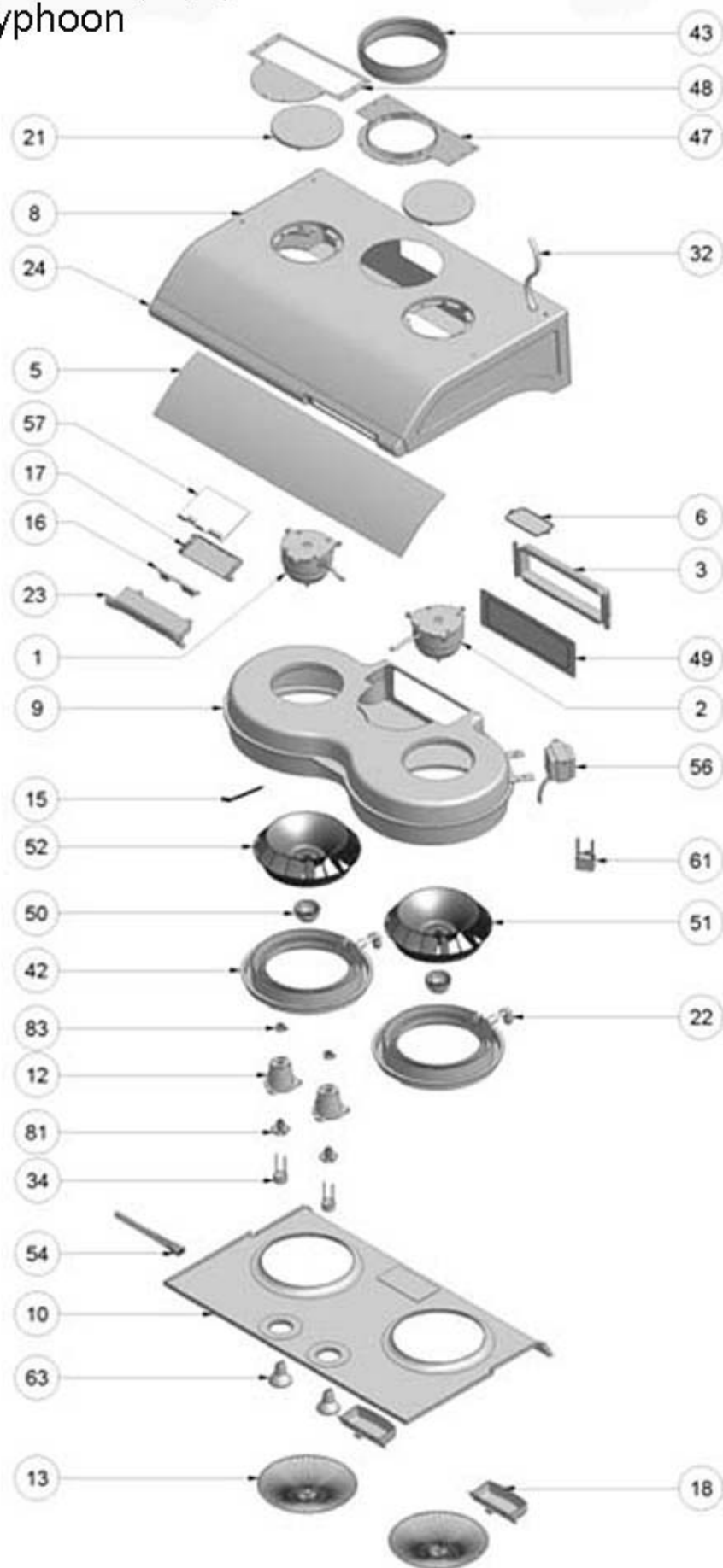


# AK21xxB,Q,S,W Typhoon



AK21xx

<b>Ref #</b>	<b>Part #</b>	<b>Description</b>	<b>per Hood</b>
1	12120024	Motor, Left	1
2	12120026	Motor, Right	1
3	54050010	Collar, Rectangular Starting	1
5	54190004	Plate, Metal Support, AK2100x	1
5	54190005	Plate, Metal Support, AK2136x	1
6	54200006	Cover, Junction Box	1
9	56100014	Housing, Motor, AK2100	1
9	56100015	Housing, Motor, AK2136	1
10	50130026	Panel, Bottom, AK2100B	1
10	50130028	Panel, Bottom, AK2100Q	1
10	50130023	Panel, Bottom, AK2100S	1
10	50130024	Panel, Bottom, AK2100W	1
10	50130027	Panel, Bottom, AK2136B	1
10	50130029	Panel, Bottom, AK2136Q	1
10	50130022	Panel, Bottom, AK2136S	1
10	50130025	Panel, Bottom, AK2136W	1
12	56200013	Housing, Lamp Socket	2
13	50220015	Safety Grill, Black	2
13	50220016	Safety Grill, Bisque	2
13	50220009	Safety Grill, SS	2
13	50220014	Safety Grill, White	2
15	11030014	Wire, Lights	1
16	11040012	Switch, Black	1
16	11040013	Switch, Gray	1
17	56210004	Cover Plate, Control Board	1
18	56160003	Residue Cup	2
21	50410005	Isolator, Motor, Black	2
21	50410003	Isolator, Motor, Gray	2
22	56150002	Residue Tube	2
23	56200007	Housing, Control Board, Black	1
23	56200031	Housing, Control Board, Gray	1
24	50250012	Bull Nose, AK2100B	1
24	50250014	Bull Nose, AK2100Q	1
24	50250015	Bull Nose, AK2100S	1

24	50250011	Bull Nose, AK2100W	1
24	50250018	Bull Nose, AK2136B	1
24	50250019	Bull Nose, AK2136Q	1
24	50250016	Bull Nose, AK2136S	1
24	50250017	Bull Nose, AK2136W	1
32	11030020	Power Cord	1
34	12100027	Light Socket, GU10 (newer)	2
34	12100030	Light Socket, HR-16 +C E27 (older)	2
42	56130010	Residue Pan	2
43	54050013	Collar, 7" Round	1
47	54050036	Transition Adapter, 7" Round	1
48	54050034	Transition Adapter, Rectangular	1
49	54050020	Cover Plate, Rectangular	1
50	56140010	Cap, Blower Wheel	2
51	54250014	Blower Wheel, Left	1
52	54250015	Blower Wheel, Right	1
54	11030017	Wires, Lamp Socket	1
56	12110007	Transformer, AK2136, AK2142, AK2148	1
56	12110008	Transformer, AK2100-r	1
57	11010011	Control Board	1
61	12050013	Capacitor	1
63	Z0B-0015	Bulb, Halogen, JDR-16 +C GU10	2
63	Z0B-0014	Bulb, Halogen, HR-16 +C E27 35W	2
81	54190002	Plate, Light Socket	2
83	56250002	Insulator, Light Socket	2
	05000034	Hardware Packet	1

NOV07.0101